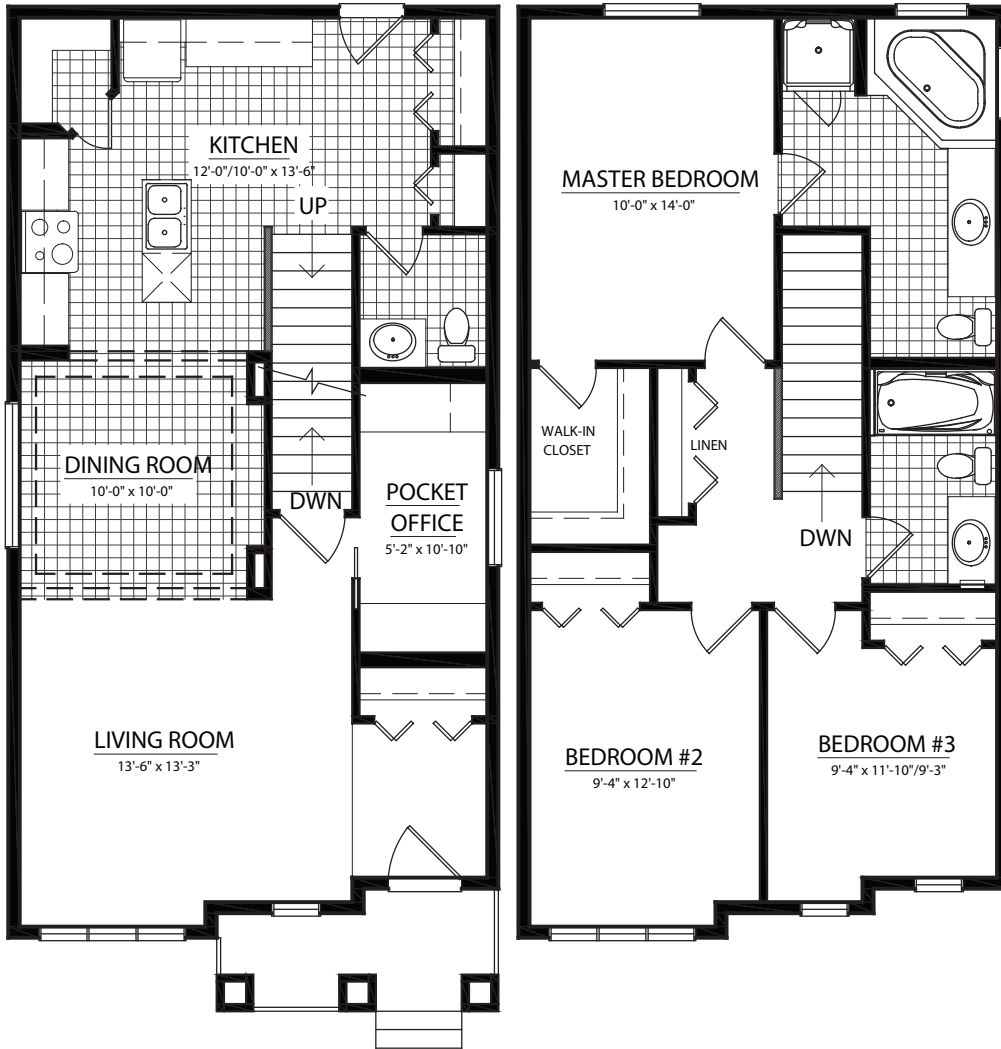


THE TENNYSON II

Main Floor: 743 Sq.Ft.
Second Level: 743 Sq.Ft
Total: 1486 Sq.Ft.

TENNYSON II ELEVATIONS



© Copyright, 2017. This plan is the property of Lincolnberg Master Builder. Floorplans, specifications and dimensions shown are approximate, and are subject to change without notice. All rights reserved, including the right to reproduction in whole or in part. Rendering(s) are artist concept only. E.&O.E

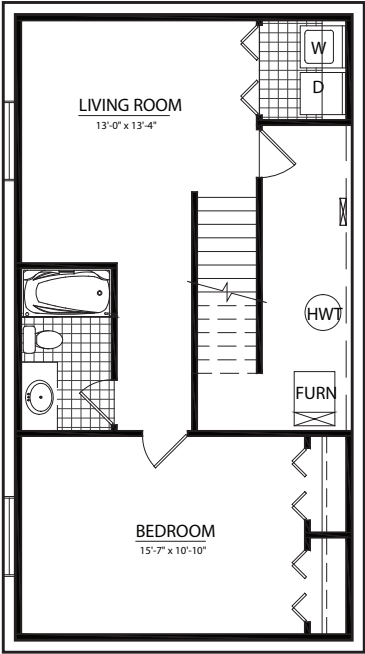
LINCOLNBERG
MASTER BUILDER



THE TENNYSON II OPTIONS

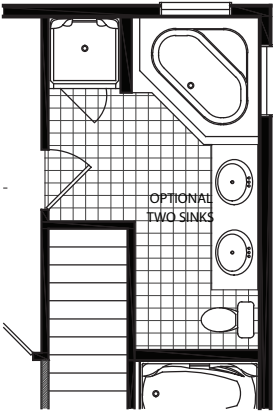
BASEMENT OPTIONS

1. 551 Sq.Ft.



ENSUITE OPTIONS

1.



© Copyright, 2017. This plan is the property of Lincolberg Master Builder. Floorplans, specifications and dimensions shown are approximate, and are subject to change without notice. All rights reserved, including the right to reproduction in whole or in part. Rendering(s) are artist concept only. E.&O.E

